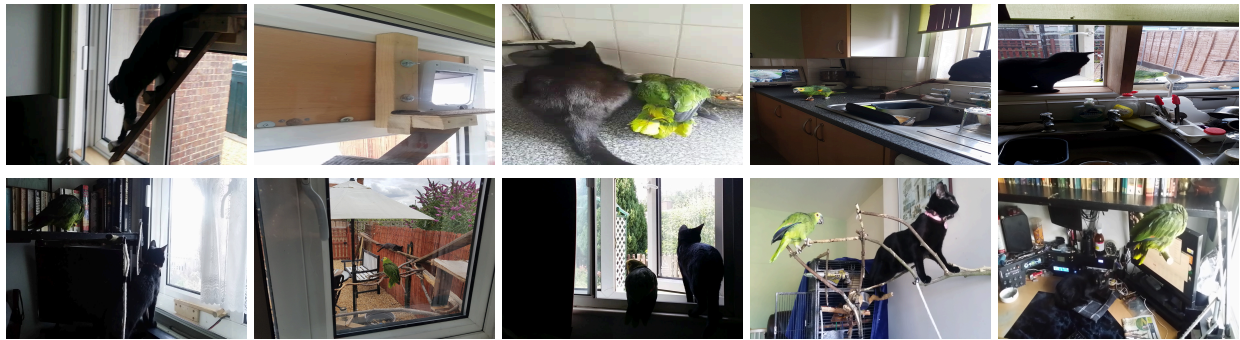


Behavioral Evidence Analysis: Counter-Height Multi-Species Integration

Photographic Evidence Overview



- The photographs document sustained predator–prey resource sharing at an elevated feeding location. Operation of this arrangement requires intact executive oversight, including:
 - Simultaneous spatial tracking of both animals
 - Anticipation of territorial escalation
 - Impulse suppression and timely intervention
 - Sustained attention to subtle behavioural signals
 - Long-term planning and routine maintenance
- These are the same capacities described as impaired in contemporaneous institutional records. The behavioural system documented here was operating continuously during that same period, without interruption, failure, or accommodation. Any assessment asserting incapacity is therefore obliged to explain how this system functioned despite those alleged deficits. No such explanation was attempted. Instead, the contradiction was bypassed and the allegation preserved.

Images 1 & 2: Cat Ladder Infrastructure

A purpose-built ramp system provides independent feline access to counter height. The structure reflects deliberate environmental design and execution. It is not

consistent with disorganisation, impulsivity, or impaired planning. When considered alongside the scale and governance of the wider evidential platform, dismissal as incidental is no longer tenable.

- Angle aligned with feline climbing capability
- Load-bearing construction
- Integration with window access
- Permanent installation

Images 3, 4 & 5: Kitchen Counter Integration & Elevated Feeding

Both animals occupy the kitchen worktop during feeding. Feeding occurs at counter height rather than ground level.

- Counter access is normalised rather than restricted
- Security monitoring forms part of routine domestic use
- Domestic organisation is maintained
- Human, avian, and feline use of space is integrated

Images 6–10: Sustained Co-habitation

Both animals share elevated interior and exterior spaces without containment. The arrangement is repeated across time and location.

Behavioral Significance: Elevated Shared Feeding

Species-Specific Baselines

Feline:

- Elevation is a defended resource
- Predatory response to avian species is instinctive

- Sharing elevated feeding space requires sustained suppression of default predatory behaviour under conditions where failure would be immediate and irreversible

Avian:

- Elevation is associated with safety
- Predator proximity during feeding typically triggers flight
- Sustained tolerance indicates extensive conditioning

Integration Requirements

Achieving and maintaining this configuration requires:

1. Consistent management of high-value shared resources
2. Established trust in handler intervention
3. Accepted handler authority by both animals
4. Long-term routine consistency

Temporal Context

- **2013:** Parrot acquired
- **2014:** CCTV installed; access infrastructure constructed
- **August 2017:** Feline adopted
- **2017–2018:** Shared elevated feeding established
- **2017–2021:** System maintained throughout institutional proceedings

The documented behavioural system was fully operational during the same period in which cognitive breakdown, impaired judgment, and loss of control were alleged. The two records describe mutually exclusive realities.

Cognitive Capacity and Record Incompatibility

Institutional characterisations include:

- Cognitive disorganisation
- Impaired judgment
- Obsessive fixation
- Active mental health crisis

Photographically documented functioning includes:

- Continuous multi-agent monitoring in a risk-bearing environment
- Construction and maintenance of physical infrastructure
- Stable domestic organisation
- Multi-year behavioural conditioning and maintenance

No explanation is provided in the institutional record for how these functions were preserved and executed if they were materially impaired. The allegation is nevertheless repeated across domains, demonstrating procedural continuity rather than independent assessment.

Instead, demonstrated competence is reinterpreted as pathology, organisation as fixation, and control as obsession. This inversion is not clinical insight. It is epistemic misconduct: the substitution of narrative preservation for evidential reconciliation.

Conclusion

The photographic record documents sustained, risk-bearing operational capacity during the period in which cognitive collapse and behavioural instability were asserted.

This evidence is not interpretive, anecdotal, or self-reported. It records a functioning system that required continuous executive control, planning, judgment, and restraint.

Where such evidence exists, allegations of incapacity demand rigorous reconciliation. No such reconciliation was attempted.

The institutional characterisation of impairment is unreconciled with the documented behavioural evidence. At the scale and persistence demonstrated here, that unreconciled contradiction constitutes institutional failure, not personal pathology.